

INSIGNIS

Volume 25, Issue 2 Newsletter for the Alta Peak Chapter of the California Native Plant Society Fall 2015

Because fall is the best time to plant California native plants, the Alta Peak Chapter will be sponsoring a trio of exciting native plant landscaping events:

Three Part Landscape Series

Part 1

Fall Program Friday September 19th

Part 2

Landscape Clinic Saturday October 3rd

Part 3

Intermountain Nursery Field Trip
Saturday October 10th

Part 1

Fall Program, "Creating
Drought-Tolerant, Wildlife-Friendly
Native Landscapes"

By Bobby Kamansky, Biologist and
Ecological Consultant

Date: Saturday, September 19, 2015, 7:00pm
Meeting and Greeting at 6:30 pm
Location: Three Rivers Art Center
41673 N Fork Dr., Three Rivers
Contact: 559-799-7438

For this timely program, Three Rivers' own Bobby Kamansky will be sharing his perspective and considerable experience on landscaping and restoring lands using California native plants. He will describe landscape methods and designs he has found that will minimize water use, while increasing drought resilience as well as beneficial insects, pollinators, birds and other desirable animals. Using various examples, he will compare, contrast and illustrate site concepts, plant color palettes and costs. Applying these practical principles in many kinds of landscapes will conserve essential natural resources while creating an appealing, sustainable and successful landscape in the increasingly challenging climate.

Kamansky, owner and principal biologist for Kamansky's Ecological Consulting, has nearly twenty years of biological and ecological experience across a broad range of project complexities, habitats, communities and ecosystems on two continents. Knowledgeable and passionate about all things natural in the Sierra Nevada Foothills and throughout the Central Valley, he has accumulated an impressive resume managing land planning projects, doing biological assessments and impact studies, research, restoration projects on a variety of habitats. His expertise includes planning for endangered species conservation and restoration, natural lands management and restoration, mapping, and natural resource interpretation.

This program is free and open to the public.



Part 2

DIY Native Plant Landscape
Design Clinic

By Melanie Keeley and Cathy Capone

Date: Saturday, October 3, 2015
9 AM to Noon
Location: Three Rivers Union School
41932 Sierra Drive, Three Rivers, CA 93271
Cost: Members \$40.00
Non-Members \$50.00
Note: Enrollment limited: Reservations required
Contact: 559-799-7438

Continued on page 2

Page 1

Growing plants in our arid, hot climate is definitely challenging and California native plants are proven survivors. To help you plan your own beautiful, drought tolerant, low care garden, the Alta Peak Chapter of the California Native Plant Society is offering a colorfully illustrated, DIY native plant landscape design workshop. Don't miss this great opportunity to learn how to beautify your yard in a low care, sustainable, practical way. With a simple planting plan in place, the landscaping process can be done in manageable steps or phases.

Our native plant experts, Melanie Keeley and Cathy Capone, with a combined 30 year experience growing California native plants, will teach you the most colorful, showy, and popular native plants; planting, care and maintenance principles; ways to combine plants in your new landscape for the longest possible flowering. Then, the landscaping workshop will begin. They will both remain on hand to help guide you as you design your own garden!

Participants

Bring to class the following items:

Photos of the existing landscape

A Rough sketch of area to be landscaped, with a directional "North Arrow" and specific dimensions, noting sun and shade exposure and special features or concerns

We will supply:

Plant and Landscape expertise

Graph paper

Pencils

Beverages and snacks

Note: Many of the plants for your new landscape will be available for purchase at our fall field trip to Intermountain Native Plant Nursery scheduled for the Saturday following the class October 10th. For further information, please see our Facebook page by searching for the Alta Peak Chapter of the California Native Plant Society or our website at: altapeakcnps.org.

We will also have relevant reference books available to purchase at this class.

Part 3

Fall Field Trip to Intermountain Nursery Harvest Festival

Date: Saturday, October 10, 2015,
Arrive: Intermountain Nursery at 9:00 am

To Carpool,

Meet at: Mary's Vineyard Shopping Mall by
McDonald's (1447 E Noble Ave,
Visalia

Depart at: 7:30 am

Destination: 30443 Auberry Road, Prather
(Located 1 mile north of Prather, 30
minutes north of Clovis on Hwy 168)

Contact: 559-623-4233

The third native plant landscaping-oriented event that Alta Peak Chapter will offering is a field trip to visit Intermountain Nursery during their special Harvest Festival. There will be arts, music, cultural activities, fancy food, kids' activities, and, of course, California native plants! To find out more, check out their website at: (http://www.intermountainnursery.com/harvest_festival.htm) For those who attended the aforementioned landscape design workshop, this will be a good introduction to Intermountain Nursery which is one of the best nearby places to get quality native plants. They have a vast selection of well grown plants. Many of the plants for your newly designed landscapes will be available there. Their sales staff will be there to answer questions and will help you select the right plant for the right place, while the music is playing and the dancers are entertaining!

Logistics: The trip to Intermountain Nursery from Mary's Vineyard Shopping Mall in Visalia, our rendezvous point, takes about 1 hour, 20 minutes. You may either meet at Mary's Vineyard, by the McDonalds at 7:30 am to carpool, or meet us at Intermountain Nursery in Prather at about 9:00 in your own vehicle.

Although the event actually starts at 10:00 am, we've been invited by the owners, Ray Lacle and Bonnie Bladen, to arrive early, any time after 8:30 am. We intend to arrive by 9:00 am (If you carpool, the number of plants you can buy will be restricted & you might want to bring stickers to identify your purchases. If, on the other hand, you have many to purchase, you may consider taking your own vehicle.) While there will be food booths at this event, you might prefer to bring water and snacks or a sack lunch.

President's Letter Summer 2015

By Melanie Keeley

As we eek through another dry, grueling summer, there is much to be concerned about. Chiefly, some of us in Tulare County have to consider the possibility of not having adequate water for basic needs, let alone to use frivolously in an ornamental garden. The question arises -- will your garden survive with the bare minimum of resources? We all need to be conscious about where every drop of water goes. Though lawns are justifiably dying or disappearing all over California, there are tactics that can be implemented to conserve on water all the while maintaining attractive, healthy gardens. These approaches will be discussed at several exciting, upcoming fall Alta Peak Chapter events. Even if a major shift in the weather occurs with the predicted El Nino event, our expectation should be that there will be future dry years and that if we choose to invest in a garden, that we implement the best possible practices that have the highest chances for low care, low water use gardens.

Please note that we will not be offering our annual fall plant sale this year. Instead, the Alta Peak Chapter is excited to offer three other native plant landscaping events.

In the first, Three Rivers' own, Bobby Kamansky, the principal of Kamansky's Ecological Consulting will be sharing his extensive experience landscaping and restoring lands with California native plants. He will describe methods and designs to reduce water use while increasing landscape drought

resilience, beneficial insects, pollinators, birds and other animals in the landscape. *(For more information see page 2)*

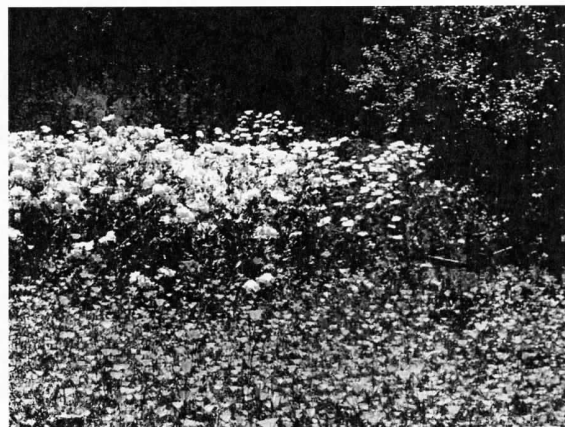
Cathy Capone (AP Board Member & former owner of California Natives Nursery) & Melanie Keeley (Sequoia and Kings Canyon National Parks Horticulturist) will be offering another of the popular DIY Landscaping Clinic. In this three hour, three part workshop, you will learn about some of the best suited and beautiful native plants for this climate and how to combine and design with them for the longest possible flowering season. Our goal is to provide the tools to successfully design and cultivate a beautiful and sustainable garden. *(For more information see page 2)*

The third fall event that Alta Peak Chapter will offering is a field trip to visit Intermountain Nursery during their special Harvest festival. There **will be arts, music, food, kids' activities and of co** California native plants! (for further information, see the following link:

http://www.intermountainnursery.com/harvest_festival.htm) For those who participated in the aforementioned landscape design clinic, Intermountain Nursery is one of the best nearby places to get quality native plants. Many of the plants for your newly designed landscapes will be available there. (For more information see page 3)

We hope you join us in these special landscape-oriented events.

**After all, FALL IS THE BEST TIME TO
PLANT CALIFORNIA NATIVES!**



Long-time Board Member, Janet Fanning Retires

— and in how many ways we will miss her!



By Joan Stewart

About twenty five years ago, after the deaths of my parents here in Springville, I began making frequent trips to/from San Diego to deal with necessary changes before settling here. I was, and had been, active in the San Diego Chapter of CNPS for many years. As a botanist, I was eager to explore the foothill and mountain flora of this southern Sierra area, and to find kindred floristic "friends."

In Three Rivers in the approximate same time frame, Elsay Cort convened a meeting to determine interest in a Tulare County group affiliated with the California Native Plant Society organization that was working to conserve and learn about native plants in the area. This initial meeting led to the formation of a Tulare County Chapter of CNPS. Elsay, looking to the horizon east of Three Rivers, urged *Alta Peak* as our chapter name. Janet Fanning first came on board in 1992. Elsay knew of her professional business experience managing a car dealership in Beverly Hills and **thought she'd be well suited for the treasurer position.** She was also interested in serving, I believe, because of her interest in her garden and what was "natural" there. Janet took on any tasks or roles needing to be organized or filled: Treasurer, Membership, Books/Posters sales, conservation, and as we moved into a larger presence in the area, she helped set up the legal and formal procedures for conducting an annual sale of native plants adapted to our foothill landscapes. For many years, Janet coordinated this annual event, arranging delivery, ordering the plants and **accounting for sales.** This has since become the **cha** main fund raiser and it serves the community well by making hard-to find native plants available.

Photos Top CNPS
Left Melanie Keeley

Janet has been treasurer on the board from those first years until two years ago when Ann Huber assumed the position. Janet was also President of the chapter for several years beginning in 1994.

When I joined the Alta Peak Board we met in her home for many years. I recall so well the long driveway, the welcome at the door, the food and drink shared as we sat in her kitchen/dining area and discussed the requirements for formal recognition from the Sacramento office and how to bring in members. We planned activities; where to offer potential programs, what other local groups we could reach out to for overlapping interests — such as art, gardening.

Janet devotedly kept on doing all this, year after year. Elsay and I, along with other members who changed from time to time, managed the other responsibilities brought on by being a recognized Chapter of the State organization. Continuing productive and friendly Board meetings held at Janet's home brought new energies and faces to us over the years. Through thick and thin, her work with/for Alta Peak never faltered.

Fast forward: Today we have new faces, talents, to strengthen Alta Peak CNPS serving on our current Board. Janet's life has now eased into a new phase and she has retired from her on-going CNPS Chapter responsibilities. Each one of us who have worked with Janet through the years will miss her loyal friendship and we will always be in awe of her outstanding dedication and commitment to this organization as well as to conservation. We, the Alta Peak Chapter Board and membership accept her need for change, and extend our heartfelt gratitude for both her friendship and unparalleled service to the botanical treasures of Tulare County.



New Pest Alert: *Phytophthora tentaculata*

By Melanie Keeley

A new plant fungus that has the potential to cause catastrophic environmental and economic consequences has been found in California. First detected in wild restoration sites in Monterey and Alameda Counties, *Phytophthora tentaculata*, was inadvertently spread from native plant nurseries by contaminated pots and possibly soil media. From there, four more native plant nurseries located in Butte, Monterey, Placer, Santa Cruz Counties have been found to have the fungus along with a total of three restoration sites. Toyon (*Heteromeles arbutifolia*), Coffeeberry (*Frangula* aka *Rhamnus californica*), Sticky Monkeyflower (*Diplacus aurantiacus*) and assorted Sage species (*Salvia* spp.) were the California native plant hosts to the disease, although plants of the families Apiaceae, Asteraceae, Ranunculaceae, Lamiaceae and Verbanaceae have also been found to be susceptible in Europe and China. "These are the first detections of the pathogen in the USA." according to pathologists Susan Frankel, USDA, Ted Swiecki and Elizabeth Bernhardt of Phytosphere Research, and Suzanne Rooney-Latham and Cheryl Blomquist of the CDFA. They further inform: "*Phytophthoras*, (pronounced Fie-tof-ther-uhs) which means "plant destroyers," are water molds, fungal-like organisms that are most closely related to diatoms and brown algae (*Stramenopila*)." *Phytophthora* "...contains over 100 described species, including the Sudden Oak Death (*Phytophthora ramorum*) pathogen and other destructive pathogens of agricultural, ornamental, and forest plants."

The pathogen causes characteristic symptoms including blackened crown and stem cankers and root rot which leads to a stunted, wilted appearance. These characteristics resemble those of other species of *Phytophthora*. Wilted, stunted pale plants should be examined for lesions on the central stem and withered, blackened root tissues with severely reduced volume.

According to the researchers, *Phytophthora tentaculata* has likely been spread by the movement of infected plants into new locations or the planting of healthy plants in previously contaminated pots or potting mix. Their concern lies in that "Restoration nurseries provide planting stock for forest and other environmental settings, so any associated pathogens can be moved into new locations and cause lasting environmental damage. The inadvertent outplanting of infected rare plant species poses an especially serious risk to remaining wild populations with limited habitat areas, which may become permanently infested."

Good habits can prevent plant pathogenic infections from spreading. Keep in mind that the disease can be spread by soil or water. Anything with dirt on it/in it can convey the spores: dirty pots, tools, shoes, hose ends, tires, potting soil, and the ground. Anything that comes into contact with the soil should be soaked for five minutes in a solution of 1 part bleach to 10 parts water. Planted pots should not be set directly on the soil. When purchasing plants, examine the health of the vegetation as well as its root for the indications of this disease listed above. Reject or dump plants if any symptoms are seen. Do not compost disposed plants! Potting media must be pathogen free.

Confirmation of *Phytophthora tentaculata* requires laboratory diagnosis. To report symptomatic plants or to receive additional information, please contact your County Agricultural Department or UC Cooperative Extension.

Photo by **Suzanne Rooney-Latham**



New Board Member

Ginger Bradshaw

By Melanie Keeley

Photo Ned Kelleher



I am delighted to introduce Ginger Bradshaw, the newest member of the Alta Peak Board of Directors. She will be acting as Membership and Outreach Chair, roles in which she will keep track of the database of members as well as to find ways to reach out to encourage new ones.

Ginger has a B.S. in Natural Resources Management and an M.S. in Ecology, both from Colorado State University (Fort Collins). (Fun fact: she attended both College of the Sequoias and College of the Redwoods too!) She's led crews doing veg mapping and classification for four years at Curecanti National Recreation Area and Black Canyon of the Gunnison National Park. She loves the high desert and its flora, including big sagebrush (*Artemisia tridentata*), to which she is highly allergic. She located a previously unknown population of a rare plant in Colorado, *Cirsium perplexans* while doing veg mapping. Ginger is currently working as an ecologist in the Division of Natural Resources at Sequoia and Kings Canyon National Parks after working in the GIS lab there. Although she claims she doesn't feel very confident identifying plants in California, I think she is quite capable and she is determined to improve. Ginger is REALLY interested in learning more about landscaping with native plants to improve her Three Rivers property, so she will probably be attending our upcoming landscaping with native plant talks, workshops and field trips. Please welcome her get to know her. We are fortunate to have her play a role on the board!

ALTA PEAK CHAPTER GRANTS

FOR 2016

By Betty Avalos

It's time to start thinking about writing a proposal to fund a California native plant project for your school, organization or personal research. The Alta Peak Chapter began its grant program in 2014 and will continue to fund two additional grants for 2016.

Two native plant project grants will be awarded with applicants receiving \$250-\$500 based on the project's itemized proposed budget. Any person or organization, including K-12 students and teachers, college students and their professors, are encouraged to apply.

Applications will be evaluated according to these criteria:

Relevance of the project to California native plant education, conservation or restoration

Primary focus on the native plants and native plant communities found in Tulare County, the Central Valley or the Southern Sierra Nevada mountains

A combination of academic background, work experience, and personal commitment from the applicant needed to successfully complete the proposed project, or participation in a profession that seeks to further the mission and goals of the California Native Plant Society

Feasibility of successfully completing the project

The Redbud Garden Club, Eleanor Roosevelt Community Learning Center, the River Ranch Oak Woodland Restoration and Demonstration Project, and Tulare Tech Prep High School were awarded grants in 2014 and 2015. The Alta Peak board of directors is looking forward to reporting on the progress of these grants in future newsletters and chapter meetings.

The deadline for the 2016 grant applications is February 1, 2016. For more information about the grant application requirements, visit the Alta Peak Chapter website at altapeakcnps.org or email Betty Avalos, the Alta Peak Chapter Chair, at bvalalos@hotmail.com.

Three Ps for a California Native Plant Garden

Benefits of native plant gardening: **saves water · supports wildlife · attracts local birds & butterflies** provides for a healthy, balanced garden

Plant Local

- **Use plants that** as local as possible
- **Pair plants that grow together in nature** such as in chaparral or oak woodlands
- **Replace your conventional, water** by non-native plants
- **Avoid invasive** plants!
- **While creating native landscapes will not make up for** natural habitats lost to development, your efforts can help provide an important bridge to nearby remaining wild areas.

Plant Light

- **Group plants with similar water, sun and soil needs**
- **Space** your plants properly to allow them to grow to their mature size in terms of height and width. This natural planting spacing will bring you closest to the ideal of no artificial irrigation
- **Wildlife will use your garden. So if you must prune,** schedule this for when it least impacts wildlife.
- **Build healthy soils by allowing leaf litter to stay in place**
- **Convert to organic gardening methods**
- **Use water wisely** design your garden to use natural rainfall
- **Consider wind as a drying agent: if wind protect** added, where possible, less water is needed.
- **Water during cooler hours of the day**
- **Design and adjust your sprinkler system to only apply** water where needed

Plant Well

- **Include plants that attract pollinators, native bees, birds** and butterflies as well as other beneficial wildlife
 - **Create plant communities in your microclimates**
 - **Make your garden vegetation fire safe**
 - **Weave edible native and pollinator** friendly plants into Your food garden
 - **Enjoy the garden, embrace where you live and share it** with wildlife, and take and share photos of your garden
- contact your local CNPS chapter for more info or go to www.cnps.org/gardening

Board of Directors

President: Melanie Baer-Keeley

mbaerkeeley@gmail.com

44246 August Drive Three Rivers, CA 93271

(559) 799-7438 (C)

Vice President, Outreach, Webmaster: Elsayh Cort

elsahc@dishmail.net

P.O. Box 245 Three Rivers, CA 93271

(559) 561-4671 (H)

Conservation: Joan Stewart

tori2toli@ocsnet.net

37759 Highway 190 Springville, CA 93265

(559) 539-2717 (H)

Secretary: Denise Griego

bdgriego@sbcglobal.com

43582 L Cienega Drive Three Rivers, CA 93271

(559) 561-4697

Treasurer: Ann Huber

ahuberdas@gmail.com

41043 Grouse Drive Three Rivers, CA 93271

(559) 561-4562 (H)

Newsletter Editor & Horticulture: Cathy Capone

cathycaponemail@gmail.com

806 W. Westfield Ave. Porterville, CA 93257

(559) 361-9164 (C) (559) 783-0201 (H)

Education & Grants: Betty Avalos

bavalos@hotmail.com

45257 Hammond Drive Three Rivers, CA 93271

(559) 561-3211 (H)

Membership, Outreach: Ginger Bradshaw

gingerbradshaw936@gmail.com

47050 Generals Hwy, #56

Three Rivers, CA 93271

(559) 565-4270

Field Trips: Shelley Quaid

Shelley.Quaid@gmail.com

201 Windsor Court Exeter, CA 93271

(559) 623-4233(H)

Member-at-Large: Sylvia Haultain

haultain@shepherdcove.net

47050 Generals Highway Three Rivers, CA 93271

(559) 679-3864 (H)

CNPS MEMBERSHIP FORM

Name: _____

Address: _____

City/Zip: _____

Telephone: _____

Email optional: _____

I wish to affiliate with: _____ Alta Peak Chapter

Other Chapter _____

Membership Category:

____ Student/ Limited Income, \$25

____ Individual, \$45 Mail with check to CNPS,

____ Family, \$75 2707 K Street, Suite 1

____ Patron, \$350 Sacramento, CA 95816

____ Benefactor, \$600

____ Mariposa Lily, \$1500

Or you can join or renew automatically via the website
www.cnps.org and click on JOIN



Calocedrus decurrens, Incline Cedar
Balch Park September 2015
By Cathy Capone

Ms. Cathy Capone
806 W. Westfield Avenue
Porterville, CA 93257-1254



ADDRESS CORRECTION REQUESTED